

8144 FLORIN ROAD @ POWER INN ROAD PROPOSED HOMELESS SLEEPING CABINS SITE

SCALE: 1/32" = 1'-0"

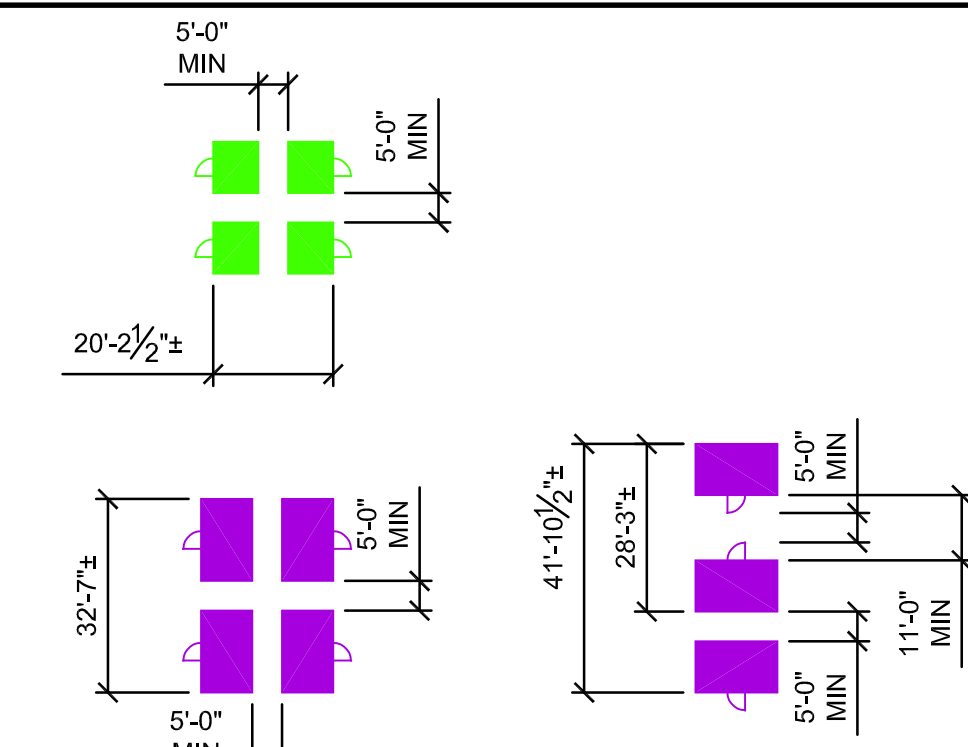
GENERAL NOTES

1. AT NO TIME SHALL ANY CABIN UNIT AND/OR OFFICE BE CLOSURE THAN 5' FROM FACE OF WALL TO FACE OF WALL.
2. TOTAL GUEST OCCUPANT LOAD OF 125 PERSONS.
3. RESTROOMS ARE 15 TO 1 PER CBC 2019 APPENDIX X.
4. ALL FIRE HOSE PULLS SHOWN ON THE PLANS ARE 150' OR LESS.
5. TRENCH SIZE - 6" WIDE, 36" DEEP, 12" SAND IN BOTTOM OVER CONDUITS, SOIL TO TOP WITHIN SOIL AREA OF TRENCHING.
6. TRENCH SIZE - 12" WIDE, 24" DEEP, 12" SAND IN BOTTOM OVER CONDUITS, AB TO BOTTOM OF CONCRETE/ASPHALT AND CONCRETE OR ASPHALT TO FINISH GRADE.

KEYNOTES #

1. SITE ACCESS SWING GATE 2-12' (24' WIDE OPENING) WITH DROP RODS WHEN CLOSED AND OPEN.
2. SITE ACCESS SWING GATE 2-10' (20' WIDE OPENING) WITH DROP ROD WHEN CLOSED.
3. PERSONNEL SWING GATE 48" WIDE PAD LOCK LATCHES
4. ADA COMPLIANT CABLE CROSSING COVERS WITHIN PEDESTRIAN AREAS.
5. BUILDING OUTLINE.
6. SLAB CLEANUP NEEDED.
7. 20 PICNIC TABLES WITH ADA ENDS 8 SEATS EACH - VINYL COATED METAL, GREEN.
8. SMUD TRANSFORMER LOCATION.
9. 800 AMP MAIN SWITCHBOARD "MSB".
10. REMOVE AND DISPOSE OF 5 PIPE BOLLARDS, CUTOFF AT GROUND LEVEL.

UNIT LAYOUTS



SITE LEGEND

- OFFICE TRAILER 12'x60' (2) BY OTHER
- SECURITY OFFICE (1) BY OTHER
- 64 SLEEPING CABIN 8'x8'± (75) MINIMUM 4 ADA ACCESSIBLE BY OTHER
- 100 SLEEPING CABIN 8'x13'± (25) MINIMUM 4 ADA ACCESSIBLE BY OTHER
- ADA RESTROOM (2) RENTAL SERVICES
- RESTROOM (7) RENTAL SERVICES
- WASTE DUMPSTER (2) RENTAL SERVICES
- NEW 800 AMP MAIN SWITCHBOARD (1)
- NEW SMUD TRANSFORMER (1) BY SMUD - WILL NEED TRANSFORMER PAD AND CONDUIT DETAILS FROM SMUD
- TRENCHING - CONCRETE / ASPHALT 1,280± LF
TRENCHING - SOIL 340± LF
- 8' TALL FENCE 1,550± LF - VINYL PRIVACY SLATES, TAN, TOP AND BOTTOM RAILS, 9 GA FABRIC AND SITE ACCESS GATES WITH SLATES.
- 8' TALL FENCE 92± LF - TOP AND BOTTOM RAILS, 9 GA FABRIC AND PERSONNEL GATES.
- STORAGE CONTAINER 8.5'x60' (2) BY OTHERS
- SHOWER TRAILER UNIT (1 ADA AND 4 NON-ADA) (2 UNITS) BY OTHERS
- EXISTING FIRE HYDRANT LOCATIONS NEEDS REPAIRS
- SMUD POWER POLE
- NEW 3" WATER VALVE AND METER
- NEW 3" BACK FLOW PREVENTER
- EXISTING FIRE DEPARTMENT CONNECTION
- EXISTING SEWER CLEAN OUT
- PROPOSED SHADE AREAS BY OTHER
- NEW PARKING LOT LIGHTS

DESIGN BY: CHRISTOPHER WYATT BRYSON
DRAWN BY: CHRISTOPHER WYATT BRYSON

NO.	DESCRIPTION	DATE
1	PARKING LOT LIGHTS & BOLLARDS	04.04.2022

LOG NO. 6321 FACILITY NO. 999067

PROJECT TITLE:
CONTRACT #####
8144 FLORIN ROAD
HOMELESS CABINS
ELECTRICAL, WATER
AND SEWER

SHEET TITLE:
SITE PLAN

SHEET NO. **AS101**

NOT FOR CONSTRUCTION